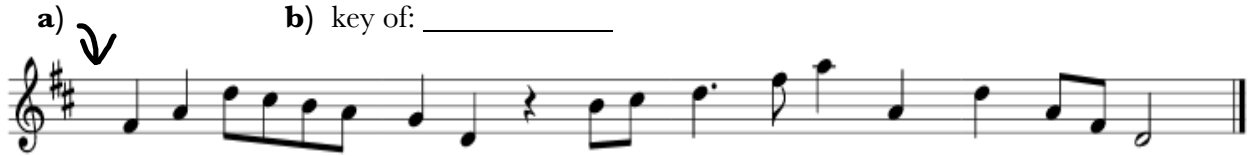


**NYSMTA – DISTRICT 4 - Written Exam**  
**Theory Test - Level Three - Sample - 60 Points**

1. The following examples are four bars long. **a)** Fill in the correct time signature on the staff (1pt); **b)** Name the major key (1pt); **c)** Add bar lines (1pt/bar); **d)** Write the counts for each measure under the notes (1pt/bar). (14 points;)



d) \_\_\_\_\_



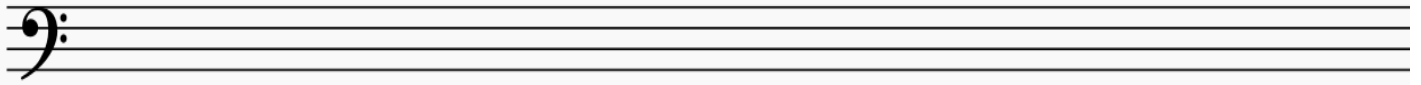
d) \_\_\_\_\_

2. Label the Major Key Signatures: (1pt/ea: 7 points)

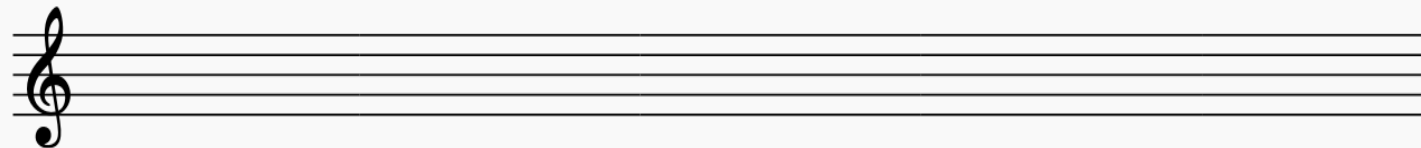


3. Write the following scales going up and down. Use accidentals in front of notes, no key signatures. (5pts/ea: 15pts)

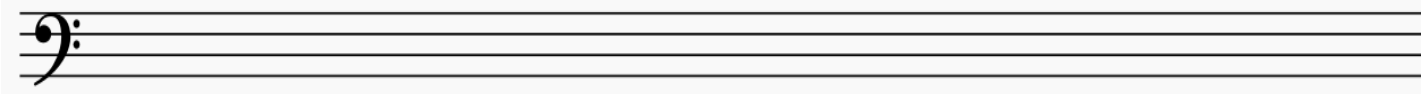
The relative melodic minor scale to C Major



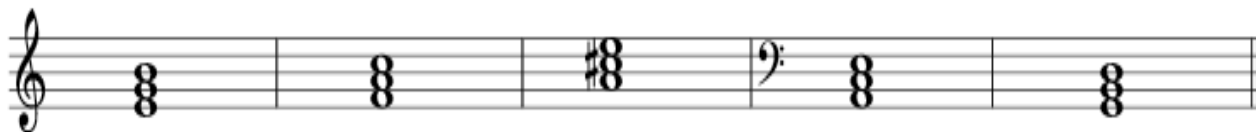
E flat Major Scale



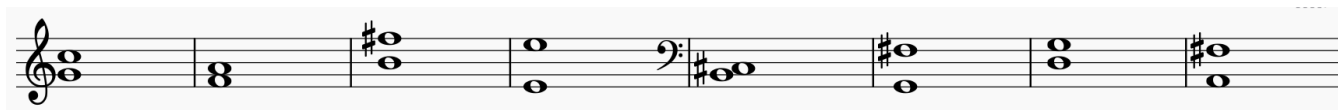
E harmonic minor scale



4. Name these triads (the letter name of the root) and their quality: Maj or min. For example: G Maj.  
(1pt/ea: 5pts)



5. Label the size and quality (Major or Perfect) of the following intervals (for ex. M3, P4). (1pt/ea: 8pts)



6. Match the terms in the left column by writing the number of the correct sign or term from the right column.  
(1pt/ea: 11pts)

Sub dominant \_\_\_\_\_

Dominant \_\_\_\_\_

Andante \_\_\_\_\_

Dolce \_\_\_\_\_

Moderato \_\_\_\_\_

Tonic \_\_\_\_\_

Binary Form \_\_\_\_\_

Dotted quarter note \_\_\_\_\_

*ff* \_\_\_\_\_

Triad \_\_\_\_\_

Allegro \_\_\_\_\_

1. 

2. I

3. Moderately

4. V

5. 

6. Very loud

7. Walking speed

8. AB

9. Fast, happily

10. IV

11. Sweetly